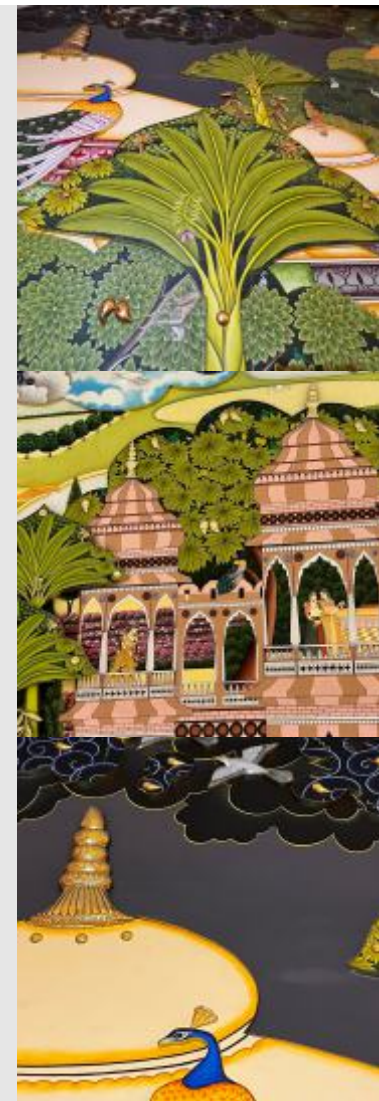




SAHIL & SARTHAK

ARTWORKS, INSTALLATIONS & ART LIGHT

sahilsarthak@sahilsarthak.com | www.sahilsarthak.com



The Incredible India Artworks for the G20 Pre-Function Area, Bharat Mandapam, ITPO Centre, Delhi

The G20 pre function area is adorned with three large canvases showcasing India's rich and timeless heritage in the style of Indian miniature painting with a contemporary touch.

The artwork takes the audience on a journey through glimpses of the vibrant colours, breath-taking landscapes and rich artisanal and cultural history of Incredible India. The painting depicts the melodies of nature - the dance of the peacock, the call of deer, fruit laden trees and the flourishing flora. We see nature and habitat coexisting in harmony with each other.

The artwork is a celebration of the arrival of monsoon winds that transform the land into a beautiful ecosystem. The pictorial scenes depict the melodies of nature. We see nature and habitat coexisting in harmony with each other. All seems to be in balance.

The art style used in this panel is the traditional Indian miniature style painting that finds its roots in many schools of art, including those of the Palas, the Rajputs, the Deccans and the Mughals. Artwork is a highly detailed hand painted pictorial composition of our narrative executed on canvas, embellished with bespoke brass sculptural elements such as fruits on the trees and brass edge detailing such as the silver lining of the monsoon clouds.

There is also a play of layers and relief work to add to the sense of depth and perspective in each of these artworks. The layers allow us to play with light and shadow in our compositions. The four corners of this artwork are in marble Inlay with intricate floral patterns of colourful semi-precious stones. This craft is known as the Prachin Kari Work from Agra, executed by master artisans.

DESIGN & EXECUTION BY: SAHIL & SARTHAK
Sarthak Sahil Design Co. Delhi.

Artwork Dimension: 5000 mm x 3050 mm



The Incredible India
Artworks for the G20
Pre-Function Area,
Bharat Mandapam,
ITPO Centre, Delhi



Artwork Dimension: 7000 mm x 3050 mm

The Incredible India
Artworks for the G20
Pre-Function Area,
Bharat Mandapam,
ITPO Centre, Delhi



Artwork Dimension: 7000 mm x 3050 mm

The Incredible India Artworks for the G20
Pre-Function Area, Bharat Mandapam, ITPO Centre, Delhi



The Incredible India Artworks for the G20
Pre-Function Area, Bharat Mandapam, ITPO Centre, Delhi



Kalpataru Installation

Diwali Edition

Handpainted Mural Painting
in framed in brass.

Dimensions - 85 inch Width x 88 Inch Height



Kalpataru

Installation

Diwali Edition

Handpainted Mural Painting
in framed in brass.



KALPATARU - "THE WISHING TREE"

VICTORIA & ALBERT MUSEUM, LONDON

11th November 2015 till 06th January 2016





KALPATARU - "THE WISHING TREE"



VICTORIA & ALBERT MUSEUM, LONDON
11th November 2015 till 06th January 2016



SAHIL & SARTHAK

sahilsarthak@sahilsarthak.com | www.sahilsarthak.com

"All rights reserved. © Sahil & Sarthak.
Copying of the design is strictly prohibited".

KALPATARU - "THE WISHING TREE"

VICTORIA & ALBERT MUSEUM, LONDON

11th November 2015 till 06th January 2016



SURYA CHANDELIER



SURYA CHANDELIER



SURYA CHANDELIER



SURYA CHANDELIER



SURYA WALL DECOR



HS SAHIL & SARTHAK

Dimension:
30 Inch Diameter, 762 mm Diameter

Material & Technique:
Brass with chasing in Antique Brass Finish



HS SAHIL & SARTHAK

Dimension:
30 Inch Diameter, 762 mm Diameter

Material & Technique:
Brass with chasing in Antique Brass Finish



HS SAHIL & SARTHAK

Dimension:
30 Inch Diameter, 762 mm Diameter

Material & Technique:
Brass with chasing in Antique Brass Finish



Mural Painted Cabinet with Brass Grill Design.



SAHIL & SARTHAK

sahilsarthak@sahilsarthak.com | www.sahilsarthak.com

"All rights reserved. © Sahil & Sarthak.
Copying of the design is strictly prohibited".



Mural Painted Cabinet with Brass Grill Design. Dimensions - 96 x 72 x 18 inch



SAHIL & SARTHAK

sahilsarthak@sahilsarthak.com | www.sahilsarthak.com

"All rights reserved. © Sahil & Sarthak.
Copying of the design is strictly prohibited".

PRAKRITI PANELS



Hand painted mural panels with brass grid and diyas, wall art installation.



At clients home.

PRAKRITI PANELS



PRAKRITI PANELS



Hand painted mural panels with brass grid and diyas, wall art installation.

THE TIRTHANKARA DIYA PANEL



The TIRTHANKARA Diya Panel is a collection of paintings of the 24 Tirthankaras of Jainism (along with their Symbols and Spirit Animals) shown in a meditative pose, composed in handcrafted brass grid like structure fitted with Diyas (oil lamp chalices).
Dimensions- 74 inches x 56 inches
Painting Style- Miniature Painting, Acrylic on Canvas.
Grid Structure & Diyas- Hand crafted brass

The "Tree Of Life" Installation for the Mall of Ranchi 2023



Stoked to share the completion and delivering of our latest Art Installation for the Mall of Ranchi! It's a significant achievement to see your vision come to life and share it with the public. Art installations have the power to enhance spaces, engage audiences, and create memorable experiences.

By successfully completing the installation, it is our effort to demonstrate the artistic skills of our artisan partners, celebrate local culture, and ability to execute a project from conception to realization. It's a testament to the dedication, hard work, and attention to details for the entire team who have made this possible in a record time.

We take pride in the fact that our art will be enjoyed by visitors to the Mall of Ranchi, enriching their experience and contributing to the overall ambiance of the space.

The installation draws its inspirations, for form as well as narrative, from the local communities and culture. The motifs and patterns recreated in metal are inspired by the Khovar and Sohrai paintings of Jharkhand.

Khovar refers to the decoration of the marriage chambers and Sohrai is the harvest painting on the mud houses, repairing it after the rains and offering a thanksgiving to the forces of nature.

The story of the art piece is that of conservation and the hope for a balanced ecosystem where man and the forest can coexist and flourish.

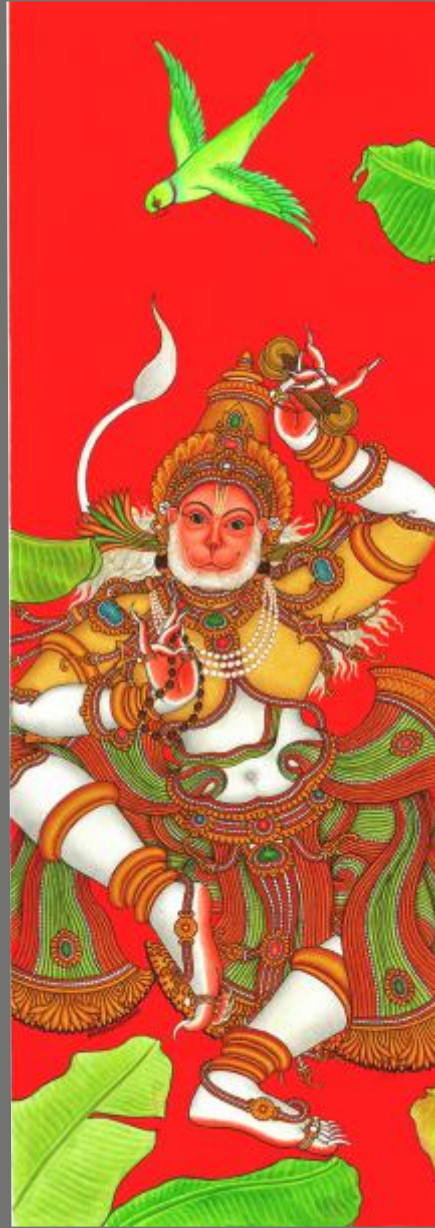
At Sahil & Sarthak, we uphold the principle of marrying craft and design and we are thrilled that our clients who gave us the opportunity to collaborate with them in doing so.

GIRIJA PANELS / PARTITION





GIRIJA PANELS
at clients home.



Hanuman Mural Panels

Various
Dimensions
Available



LOTUS

Mural Panels



Navrasa Mural Painting



VEERAM



SHANTHAM



KARUNAM



HAASYAM

Handpainted Mural Painting on Ceiling.

Lotus Mural Painting



Handpainted Mural Painting on Ceiling.
12 ft x 8 ft





SAHIL & SARTHAK

sahilsarthak@sahilsarthak.com | www.sahilsarthak.com

"All rights reserved. © Sahil & Sarthak.
Copying of the design is strictly prohibited".

LOTUS POND MURAL CEILING PAINTING



Handpainted Mural Painting on Ceiling.

LOTUS POND MURAL PAINTING



Handpainted Mural Painting
in brass frames





Product Code : SSVSNL22

Dimensions:

36 inch Diameter x 19 inch Height

91 cm Diameter x 48 cm Height

Padmaja Light



SARTHAK SAHIL DESIGN CO.

WWW.SAHILSARTHAK.COM

The one who
is born
from Lotus

Padmaja Light Grand

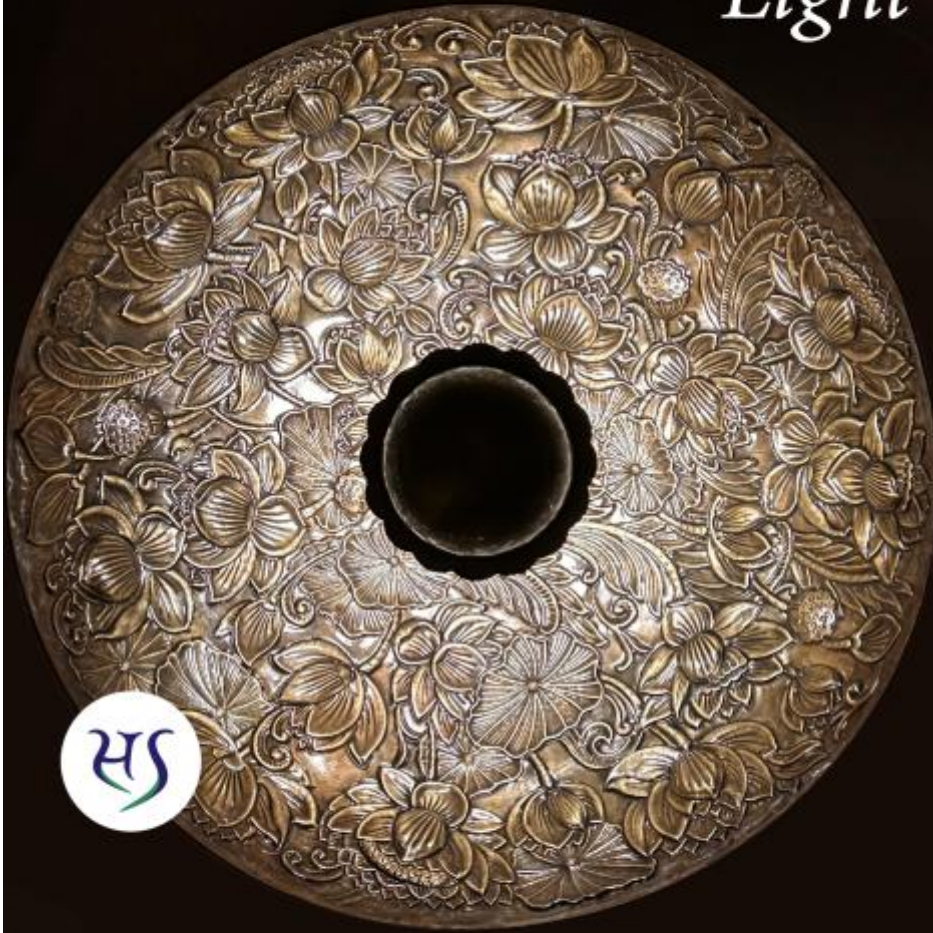
Product Code : SSPMJL26

Dimensions:

48 inch Diameter x 19 inch Height

122 cm Diameter x 48 cm Height

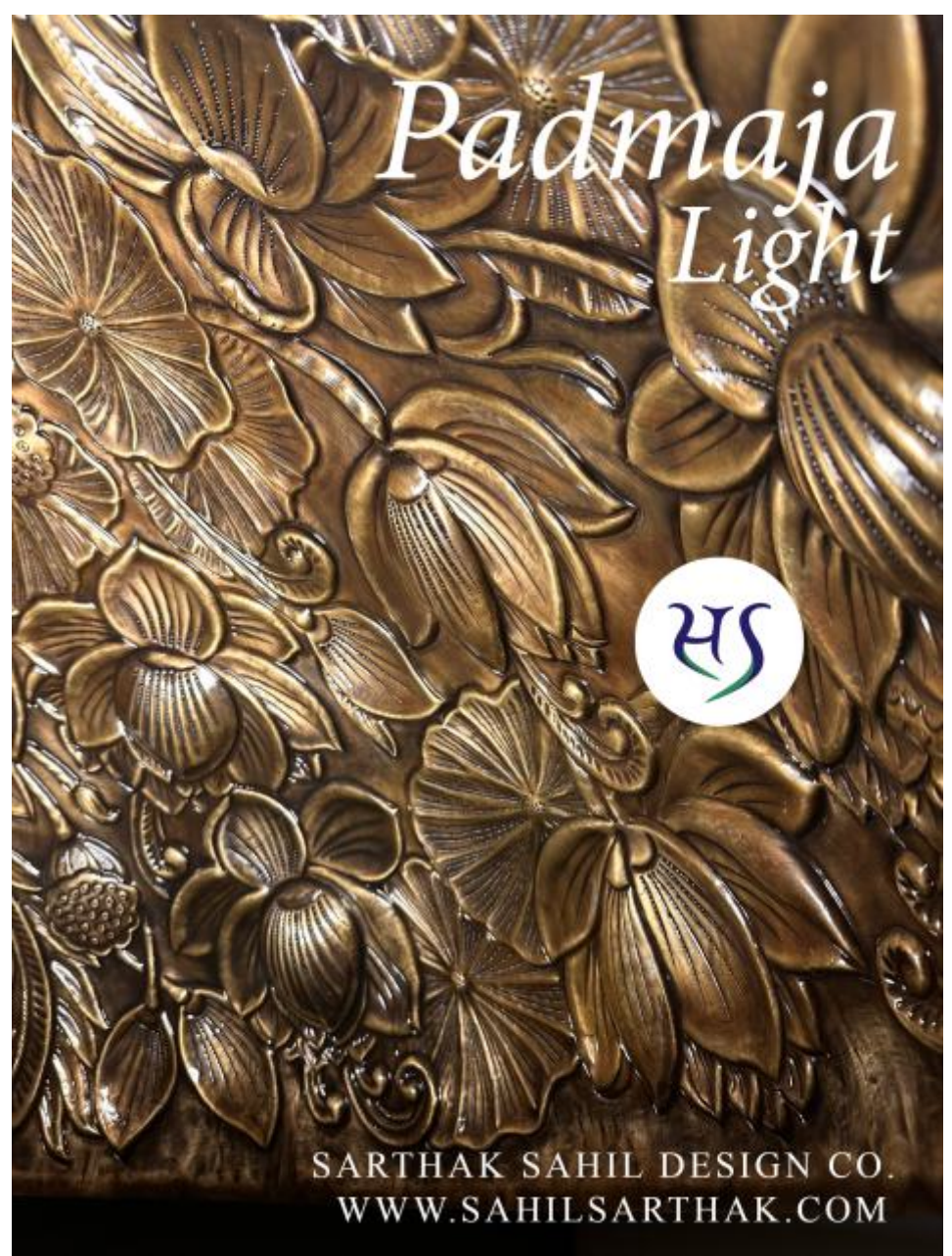
Padmaja Light



SARTHAK SAHIL DESIGN CO.

WWW.SAHILSARTHAK.COM

Padmaja Light



SARTHAK SAHIL DESIGN CO.
WWW.SAHILSARTHAK.COM



CALICO

FLOOR
SCULPTURE

Diameter:
24 inch Diameter x 78 inch Height





Dimensions - 52 x 84 x 14 inch

KATHAKU CEILING LIGHT

KINDI LIGHT



At clients home.

URLI LIGHT



At clients home.



HANSA

DINING TABLE BASE

MATERIAL - BRASS
FINISH - BRASS ANTIQUE
Dimensions Brass Base - 54 x 18 x 30 inch
137 x 46 x 76 cm
Glass Dimensions Suggested - 2400 x 1250 x 15 mm



Dimension: 54 x 30 inch



Handmade chazing
brass panels.

BIRDS on the GRENADA





BIRDS on the GRENADA

 SAHIL & SARTHAK

"All rights reserved. © Sahil & Sarthak."

sahilsarthak@sahilsarthak.com | www.sahilsarthak.com

Copying of the design is strictly prohibited".

BIRDS on the GRENADA



 SAHIL & SARTHAK

Dimension of the Artwork:
54 inch Width x 60 inch Height x 4 inch
137 Width cm x 155 cm Height x 10 cm



 SAHIL & SARTHAK

"All rights reserved. © Sahil & Sarthak."

sahilsarthak@sahilsarthak.com | www.sahilsarthak.com

Copying of the design is strictly prohibited".

LEATHER SHADOW LIGHTING INSTALLATION

The abstract sculptures that are a part of the collection, are a contemporary interpretation of Tholpavakoothu. Though re-contextualized, the traditional skills have been kept intact. The internal light source makes these leather puppets glow, reminiscing a traditional leather puppet performance.

 SAHIL & SARTHAK

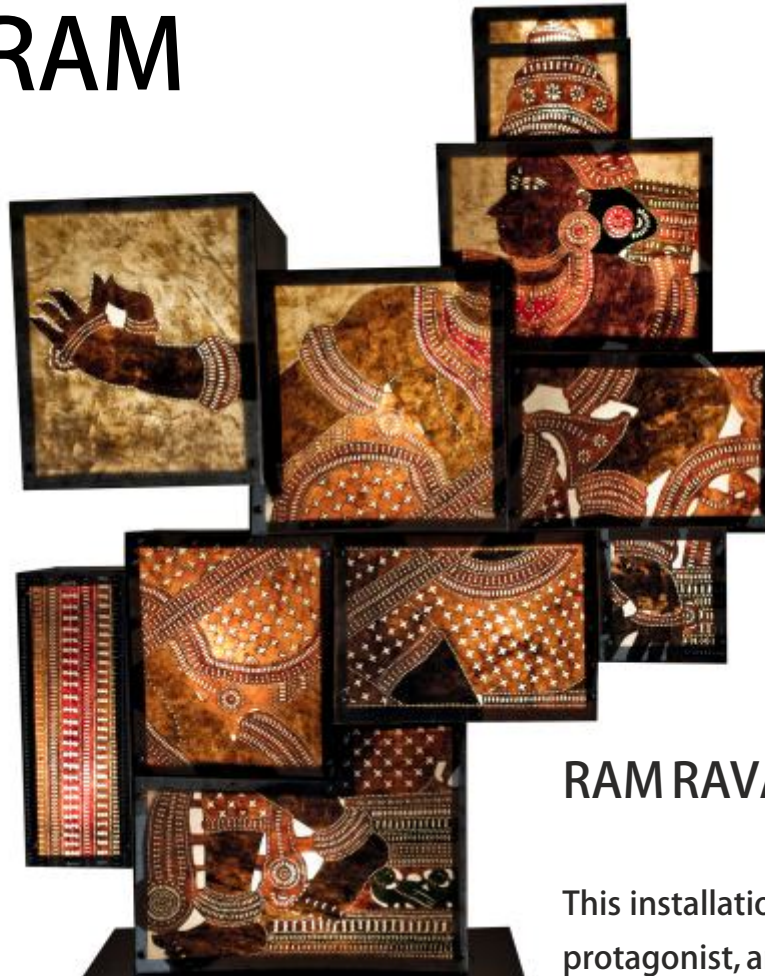
sahilsarthak@sahilsarthak.com | www.sahilsarthak.com | T: +91 11 4135 4211



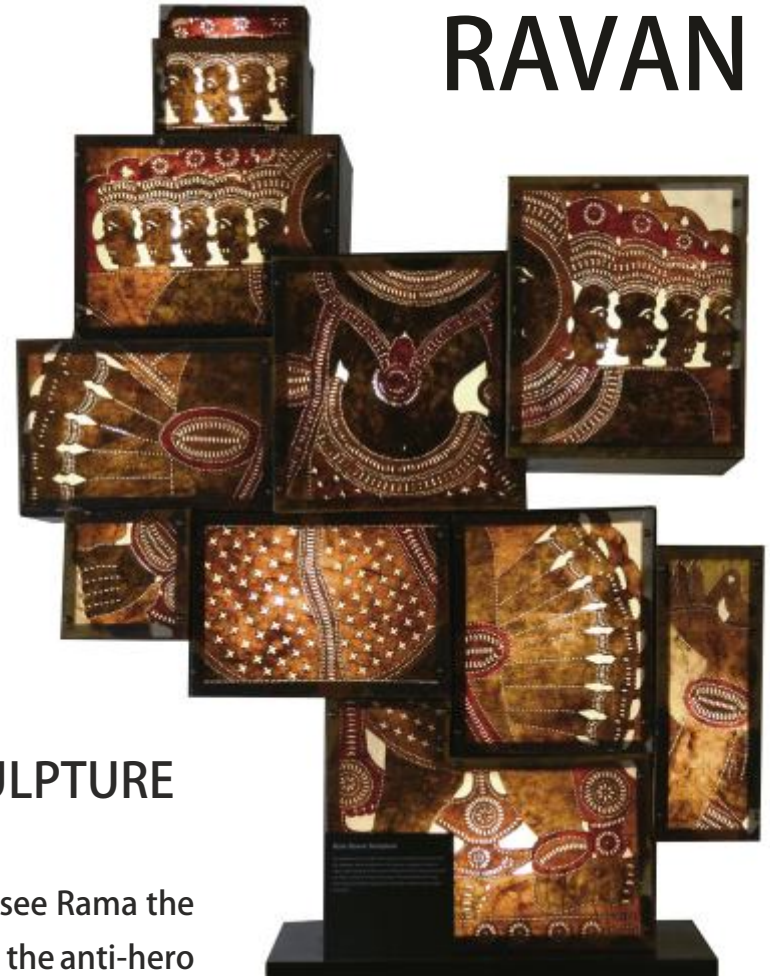
K E R A L A  S U T R A

A Collection of Inimitable Lights

RAM



RAVAN



RAM RAVAN SCULPTURE

This installation we can see Rama the protagonist, and Ravana the anti-hero of the Epic Ramayana, placed on either side of the sculpture, signifying the duality in nature. Rama represents all that is good and Ravana the demon King represents the evil within us, which we all must try to conquer.

 SAHIL & SARTHAK

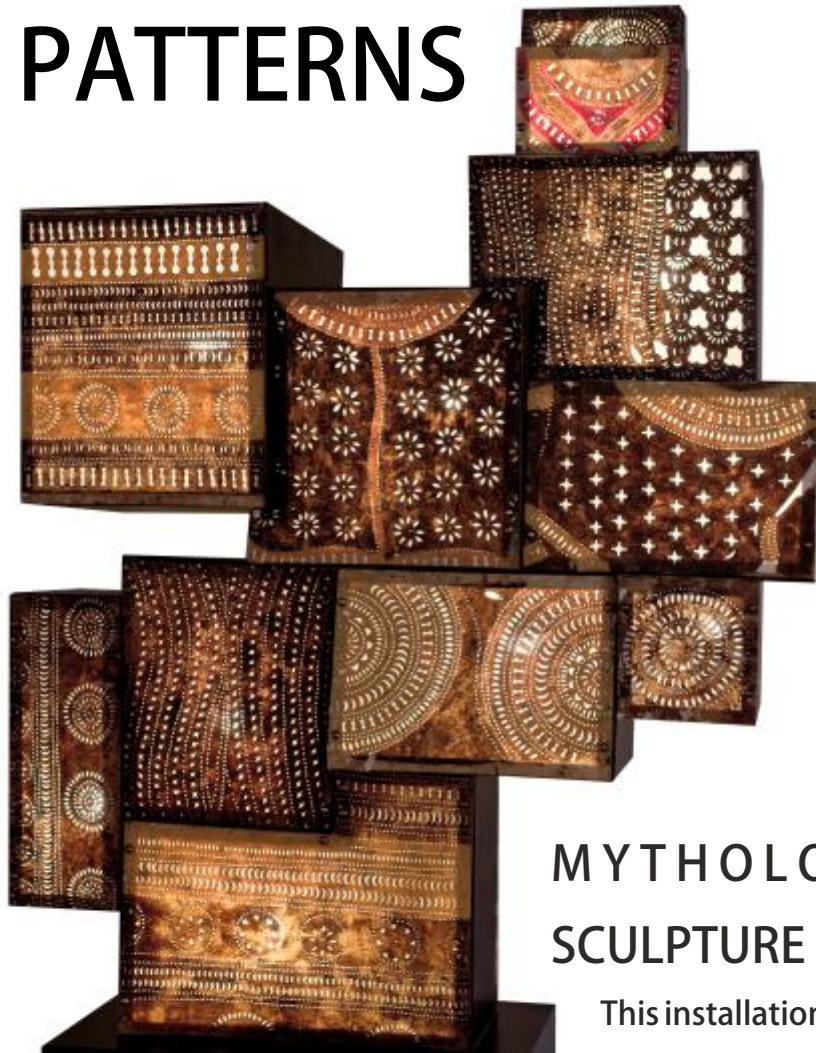
sahilsarthak@sahilsarthak.com | www.sahilsarthak.com

K E R A L A S U T R A

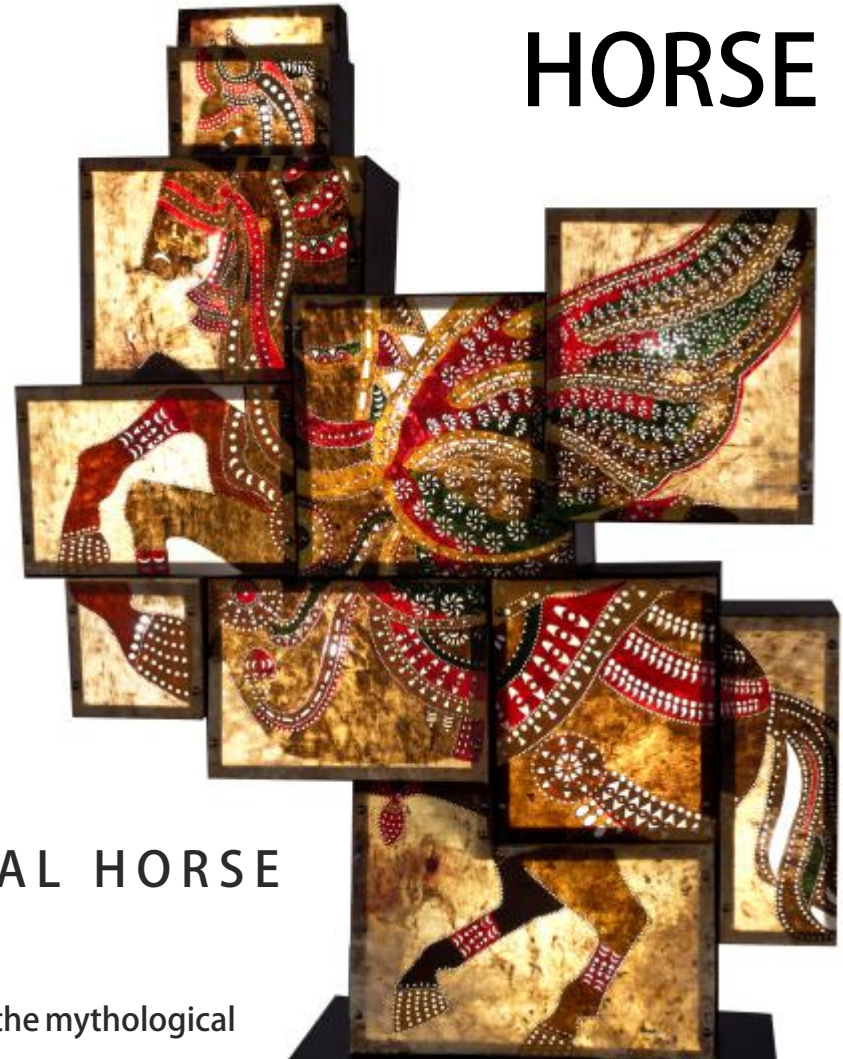
A Collection of Inimitable Lights

DIMENSION
46 x 22 x 84 inch

PATTERNS



HORSE



MYTHOLOGICAL HORSE SCULPTURE

This installation depicts the mythological flying horse on one side and a directory of every kind of punch used by the Kerala leather puppet maker on the other side. The character can be recognized to be a King, or adversary by the type of punch

 SAHIL & SARTHAK

sahilsarthak@sahilsarthak.com | www.sahilsarthak.com

K E R A L A S U T R A

A Collection of Inimitable Lights

DIMENSION
46 x 22 x 84 inch

CEILING INSTALLATION LEATHER PUPPET



DIMENSION:

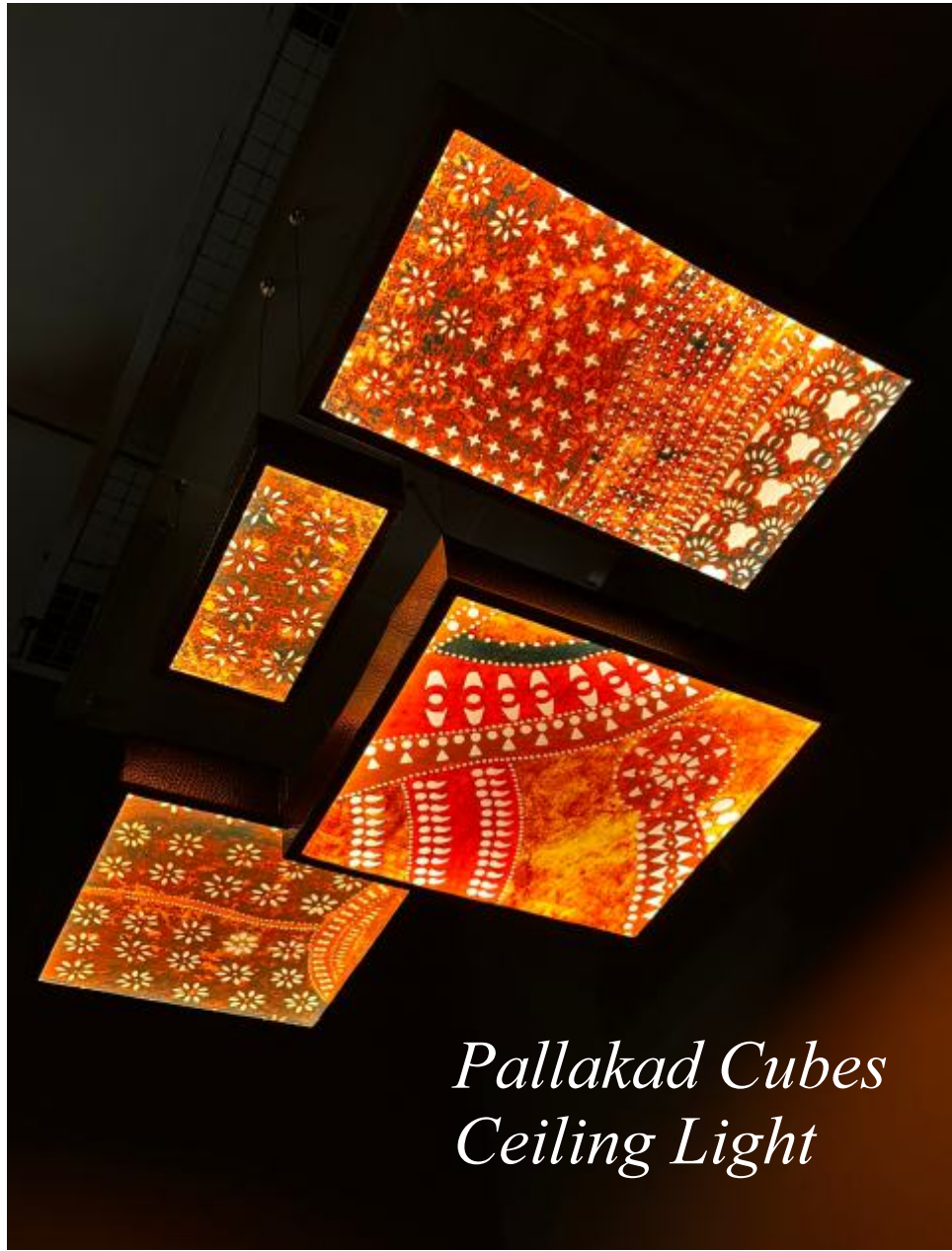
120 inch x 100 inch x 7 inch

 SAHIL & SARTHAK

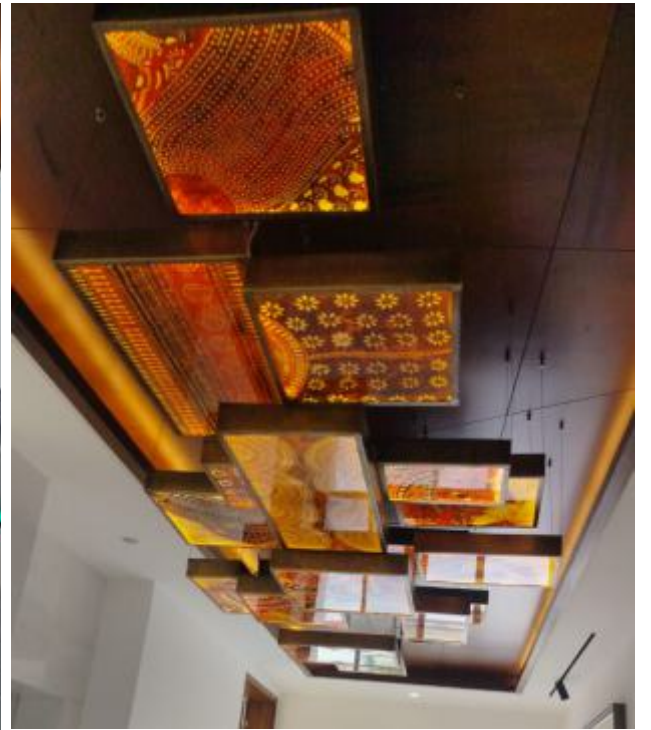
sahilsarthak@sahilsarthak.com | www.sahilsarthak.com | T: +91 11 4135 4211

K E R A L A  S U T R A

A Collection of Inimitable Lights



*Pallakad Cubes
Ceiling Light*



*at clients home
Dimension: 12 ft x 4 ft*





Dimension
Wall panels - 24" x 66" x 4"
Base Box - 24" x 9" x 9"

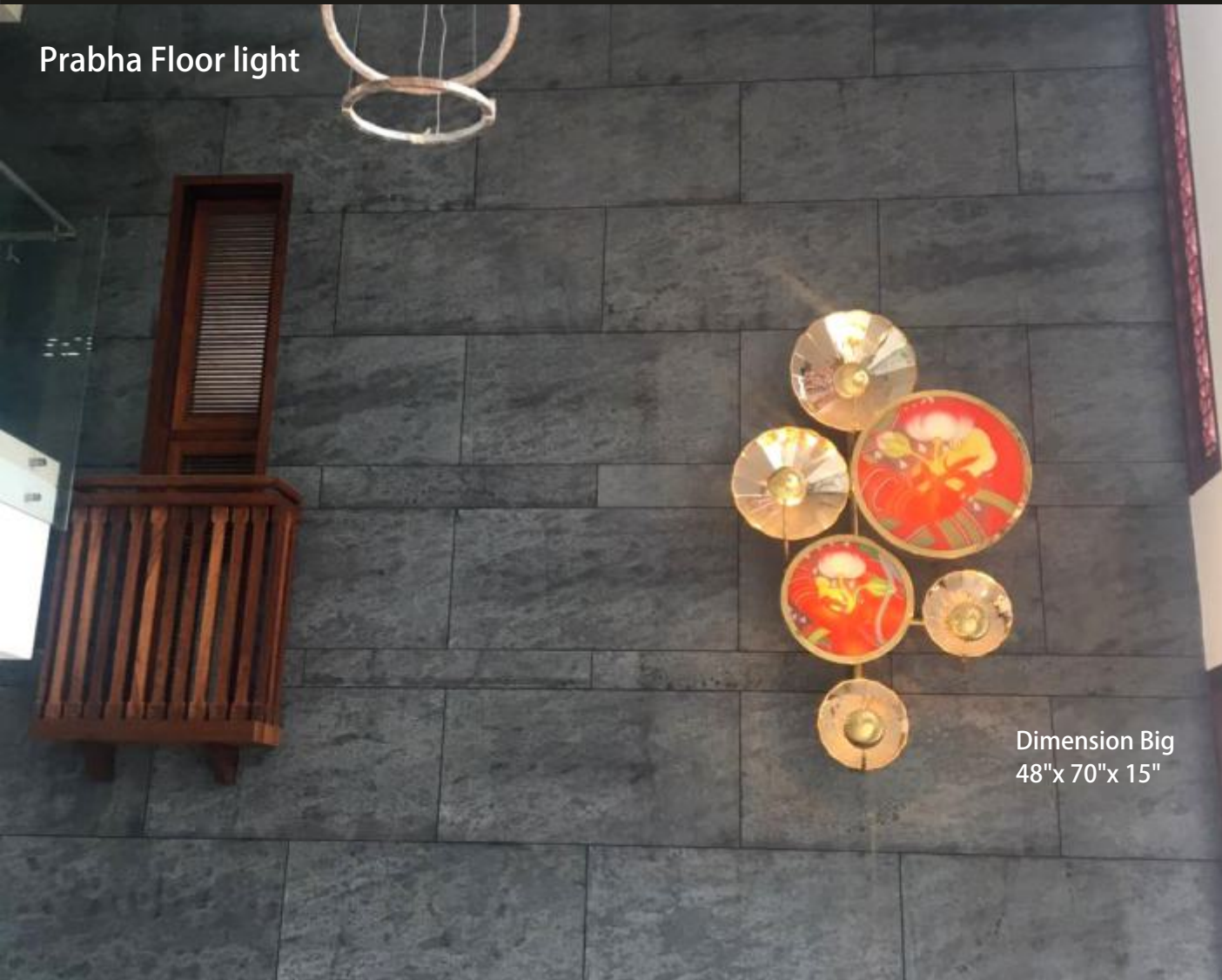
Aranmula Cloud Panel lights

The cloud like formations of the mirrors is inspired by the metaphysical clouds in Kalidasa's epic poem Meghdoot. While the mirrors represent the messenger cloud Meghdoot, the black granitine finish ceramic tiles represent the difficult terrain he has

to cross to accomplish his mission.

The cluster of hand crafted mirrors have been juxtaposed with the usual silvered glass mirrors to accentuate the craft. Intricately cut tiles provide the patterning. The stone look alike movable base is made with a ceramic tile, which has helped reduce the weight.

Prabha Floor light



Dimension Big
48"x 70"x 15"

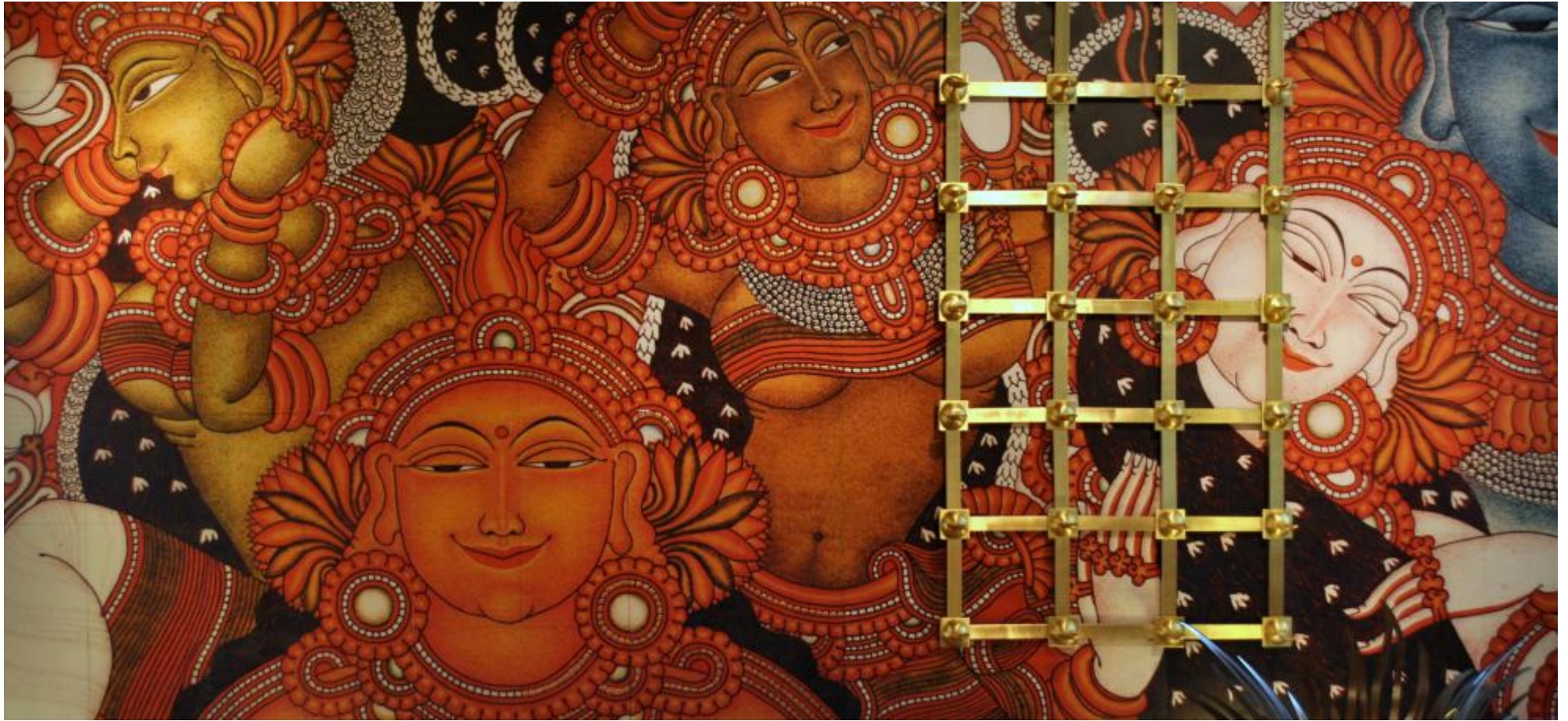
Prabha Wall light



Dimension Small
36"x 57"x 15"

The floor and ground lights are contemporary interpretations of this local Kerala artefact. The prabhas have been handcrafted in brass and plated to create a mirror effect. To maintain the traditional narrative, the Kerala style of mural paintings have been hand painted and transferred on to glass.

SHRINGAAR WALL WITH DIYA PANEL



This installation celebrates the Shringaar rasa, one of the nine rasas, loosely translated as nine feelings, tastes, or moods. Feelings of love, attraction, and adornment fall in the category of the shringaar rasa. This wall screen seems to depict a story of five women friends who seem to be indulging in adornment. The narrative is brought to life by master artist Sudhir and his atelier in the Kerala

mural painting style. The original colour palette has been maintained while blowing up and transferring the painting onto a ceramic tile base, capturing it for eternity. The copper relief on the painting has been applied by hand. The diya panel placed over the composition helps provide the light source.

POPPY LIGHT, MIRRORS & WALL DECOR



POPPY MIRRORS & WALL DECOR

Poppy mirror is a graphical representation of a playful Poppy flower. The mirror frame has been crafted in brass sheet, inspired by the sawing form of the poppy petals in the wind. The frame has been accentuated with a beautiful beaten texture and an array of hand-cut motifs. This piece is available in various metal finishes such as matt gold, rose gold, antiques and patina.

These mirrors come in 5 different sizes and can be used for display as individual mirrors or an artistic wall installation. The mirrors can be further complimented with beautifully handcrafted poppy flower shaped rosettes, made in brass



PEACE LILY
MIRROR



Dimension:
25.5 x 43 inch
65 x 109 cm
Code: SSPLMF01
Material: Brass
Finish: Brass Antique

KANAK
MIRROR



Dimension:
42 inch Diameter
106 cm Diameter.
Code: SSKM42iD
Material: Brass
Finish: Brass Matt

PADMA
MIRROR



Dimension:
36 inch Diameter
91 cm Diameter
Code: SSPM36iD
Material: Brass
Finish: Brass Polish

SARUS BRASS INLAY DOOR HANDLE



SAHIL & SARTHAK

ELEPHANT BRASS INLAY DOOR HANDLE



SAHIL & SARTHAK

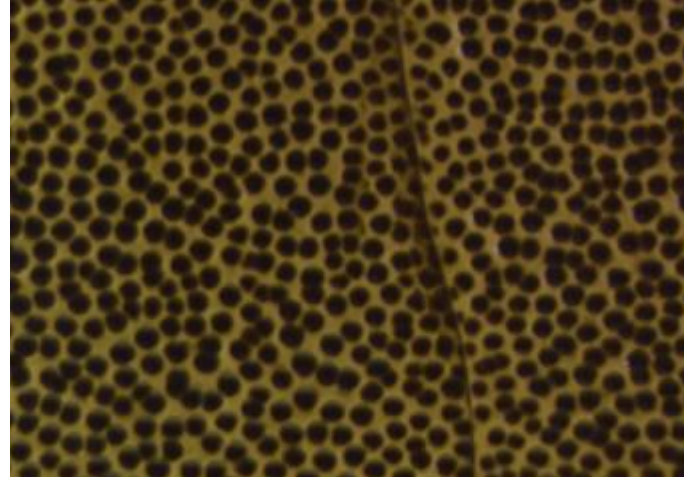


SAHIL & SARTHAK

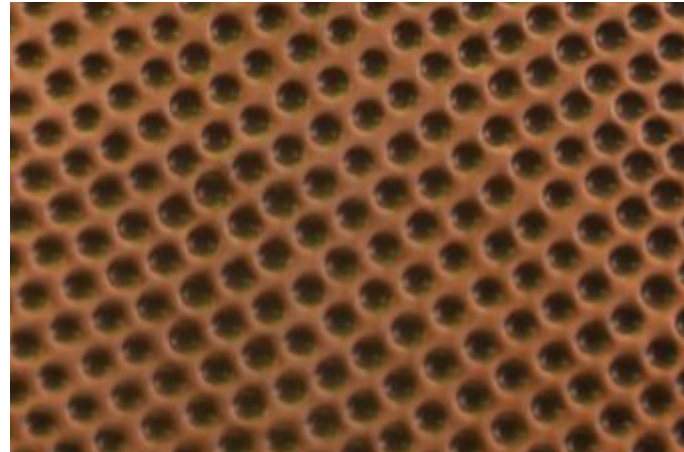
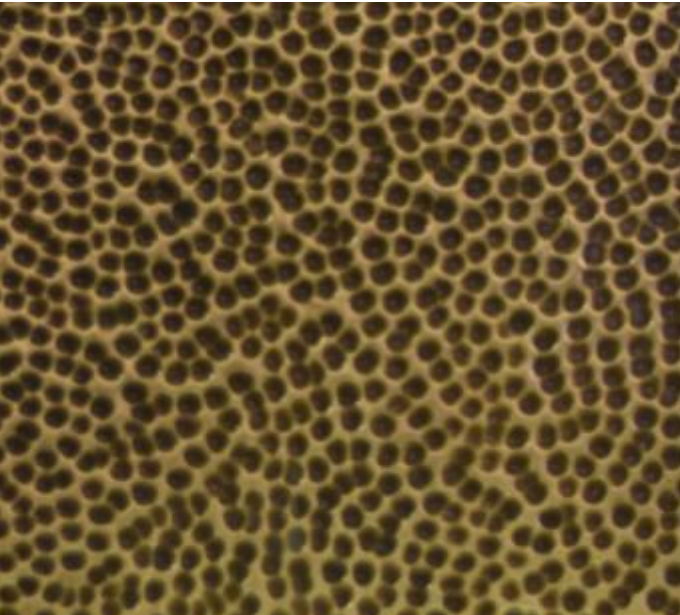
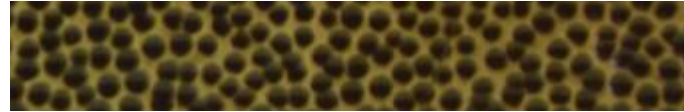
sahilsarthak@sahilsarthak.com | www.sahilsarthak.com

"All rights reserved. © Sahil & Sarthak.
Copying of the design is strictly prohibited".

Wall & Ceiling Tiles



Handmade in Brass & Copper



Various Sizes Available.



Poppy Art Decor



Material
Brass

LOTUS Wall Art



Material: Brass

Available in Various Dimensions

KALPATARU WALL ART

This wall installation is inspired by the "Kalpataru" a wish-fulfilling divine tree in Indian mythology.

This piece celebrates the concept of nature and culture, brought to life by the exquisite skills and craftsmanship of traditional silversmiths and filigree master artisans.

The outer frame is inspired by the shape of a "Tulsi" leaf (Holy Basil Leaf), encompassing the elaborate foliage of chased floral motifs and ivy patterns, crafted in antique brass, brushed copper and green patina. On a closer look, one can discover deeper cultural nuances, for example the concept of "Shubh Labh" (Auspiciousness & Prosperity), depicted by holy symbols (like the lotus) representing the Devine Trinity of "Ganesha" (God of Fortune), "Lakshmi" (Goddess of Wealth) & "Saraswati" (Goddess of Knowledge).

The piece also has the provision to accommodate cover lights, making it a functional wall covering.

Dimension: 111 x 41 cm / 44 x 16 Inch

Product Code: SSKWA01

Material: Copper & Brass



ZINNIA WALL DECOR



Dimensions:
13 inch, 14 inch & 16 inch Bigger Flower,
7.5 & 8 inch Smaller Flower,
Rod Length - 38, 42, 46 inch.

Code: SSZWAD01
Material: Brass
Finish: Brass Antique